



Backpack manual powder duster with 9-litre capacity, a tube outlet and adjustable diffuser. Wide range of uses: from ant insecticides to sulphur-based fungicides.



## Advantages

- Airtight closure on the lid.
- Large filling opening for easy filling and emptying.
- Adjustable powder dispenser.
- Suitable for use with products of ecological origin (diatomaceous earth).

### Technical information

Technical information	POLMAX
USEFUL CAPACITY	9 L
TOTAL CAPACITY	9 L
GROSS WEIGHT	3.47 Kg
NET WEIGHT	3.06 Kg
WIDE FILLER OPENING	YES
STRAPS	Adjustable

### Logistics data

Logistics data	POLMAX
CODE	8.03.40
EAN	84.14685.30008.9
CONDITIONING	1 unit
UNITS PER PALLET	14 units
DIMENSIONS PER PALLET	1200 X 800 X 960

## Functional information



Strong and wide blower



Rigid extension tube



Flexible tube outlet



Large filling opening



Adjustable diffuser



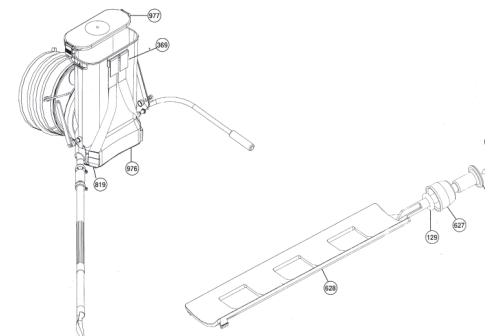
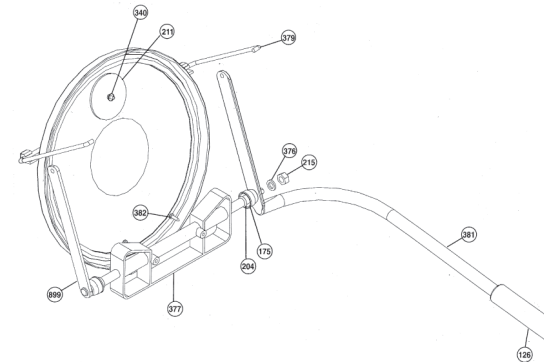
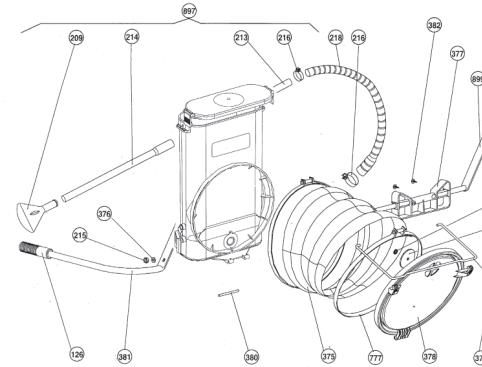
Powder dose dispenser



Adjustable straps

## SPARE PARTS

Extend the service life of your sprayer easily replacing parts.



N.	COD.	Q	SPARE PARTS NAME
126	8.39.43.304.1	1	GRIP
129	2.23.99.910	1	ROUND GASKET 7,5
157	2.51.27.901	1	SCREW
175	8.38.08.312	2	NUT
204	2.23.99.533	2	ROUND GASKET
209	8.03.13.305	1	DIFFUSOR
211	8.03.03.331	1	LOCK VALVE
213	8.03.03.354	1	RIGID PIPE
214	8.03.03.454	1	RIGID EXTENSION PIPE
215	2.62.23.008	1	NUT M-8
216	2.01.24.031	2	31-35 CLAMP
218	8.03.43.021	1	FLEXIBLE TUBE
340	2.19.99.073	1	VALVE WASHER
369	8.39.47.420	1	STRAP
375	8.03.43.008	1	BELLOW
376	2.19.99.023	1	LEVER WASHER
377	8.03.43.303	1	AGITATOR
378	8.03.43.302	1	BELLOWS COVER
379	8.03.43.404	1	TIE BAR
380	8.03.43.320	1	RIFLED BOLT
381	8.03.43.007	1	LEVER
382	2.50.23.906	2	STIRRER SCREW
626	8.03.40.305	1	REGULATOR BAR
627	8.38.47.303	1	NUT
628	8.03.40.303	1	REGULATOR
777	8.03.03.805	2	CLAMP
819	8.39.47.802	1	STRAP WITH HOOK
897	8.03.40.806	1	BAG WITH PIPES
899	8.03.43.606	1	BAG WITH ARM
976	8.03.40.601	1	COMPLETE TANK
977	8.03.40.602	1	COMPLETE LID
	8.03.40.200	1	POLMAX INSTRUCTION SHEET
	8.03.40.201	1	POLMAX PACKAGING